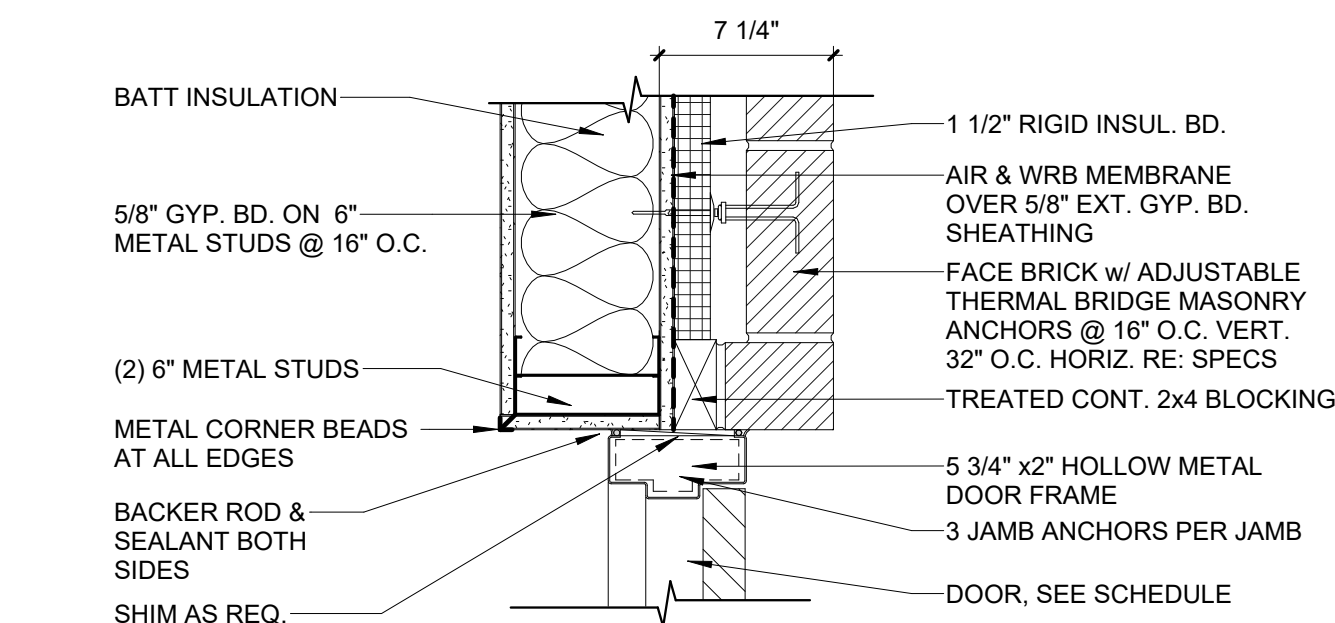
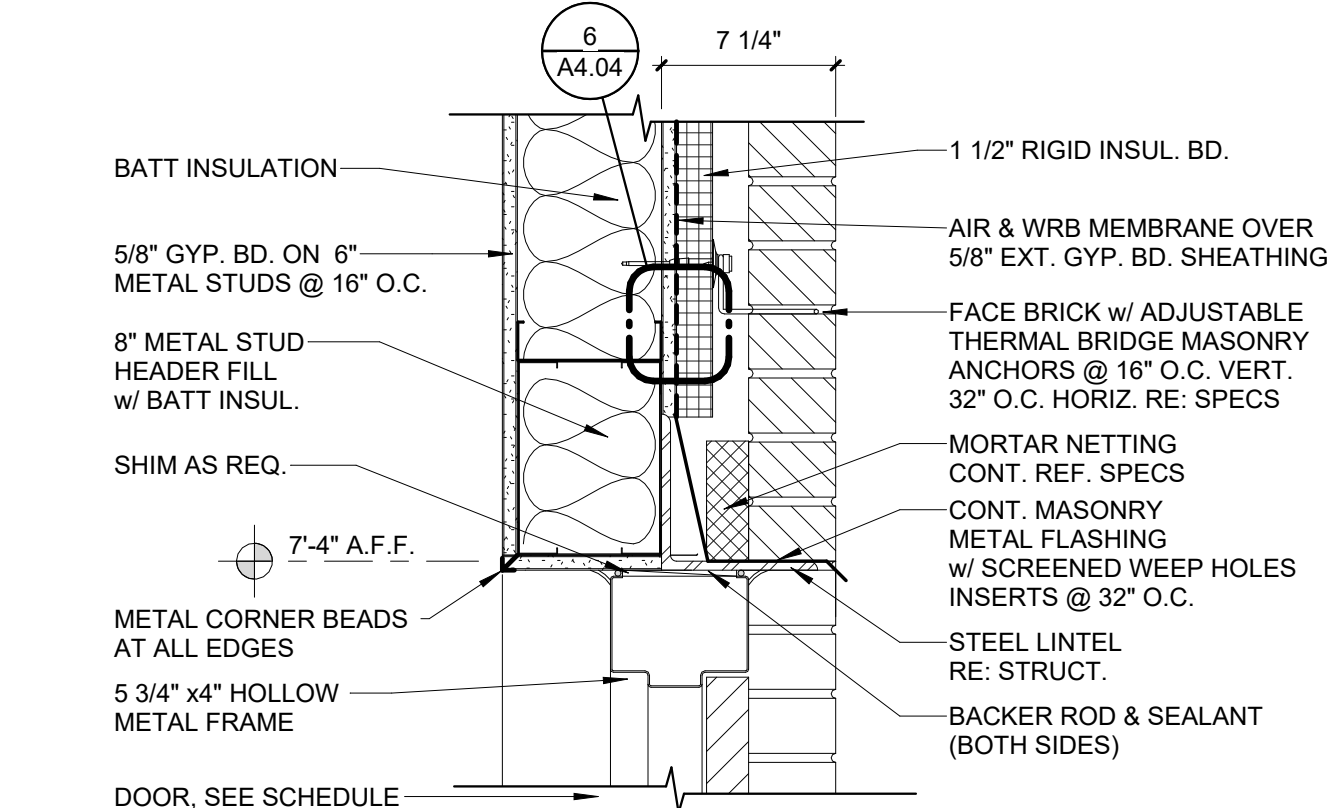
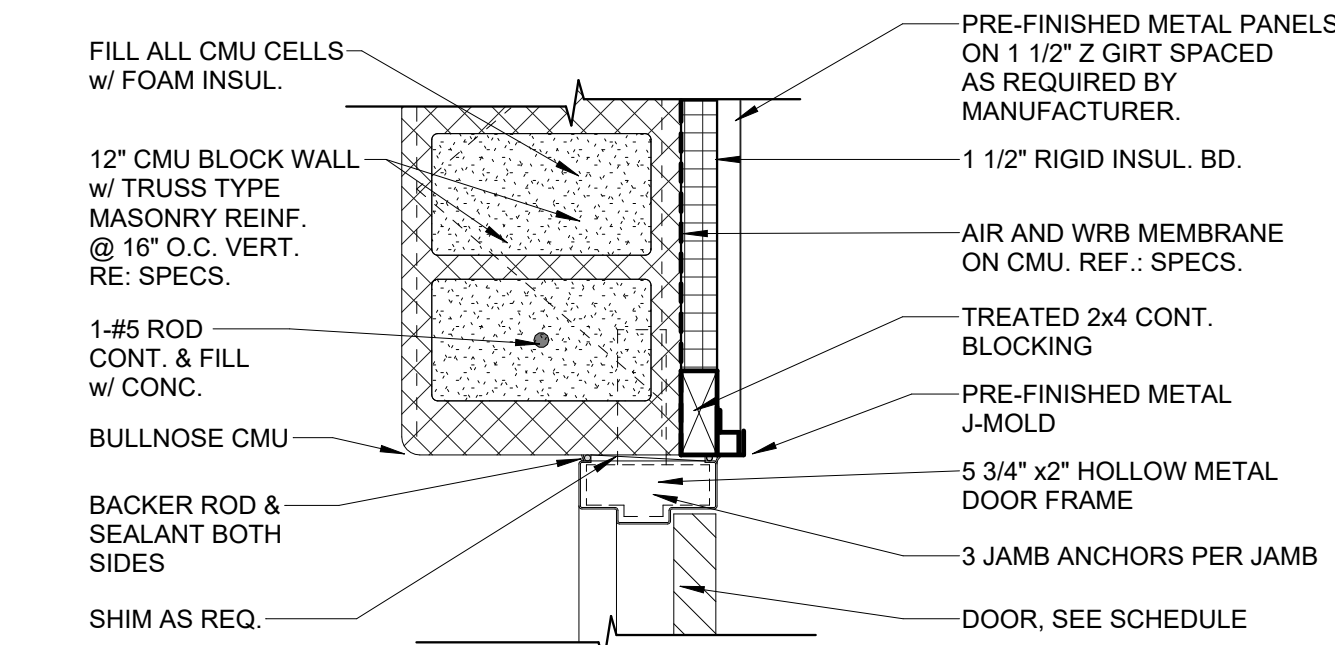


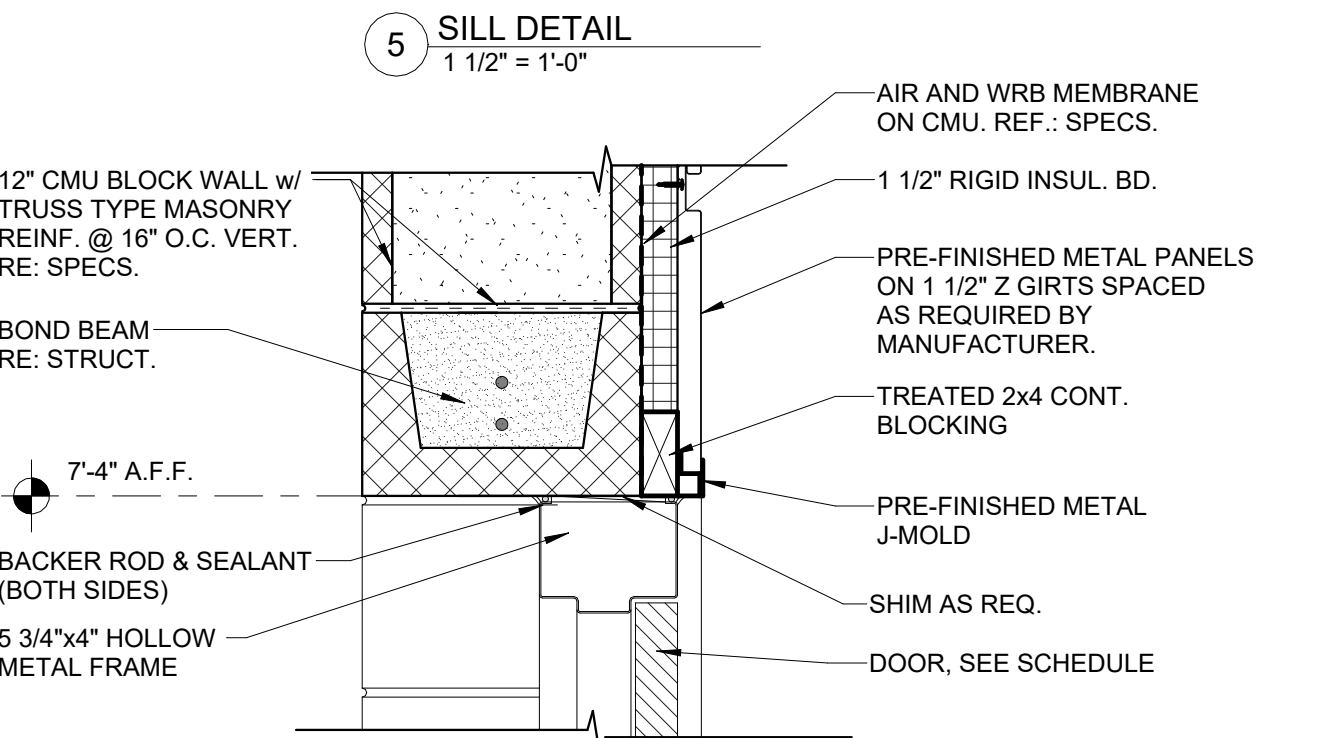
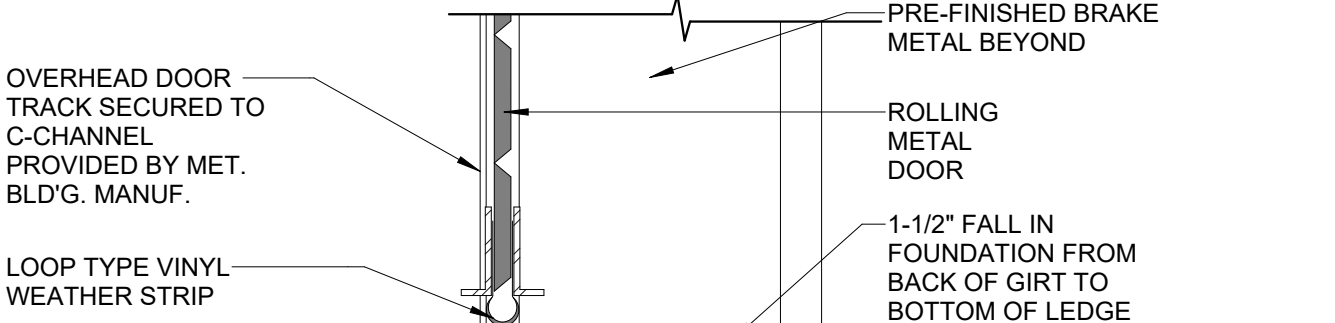
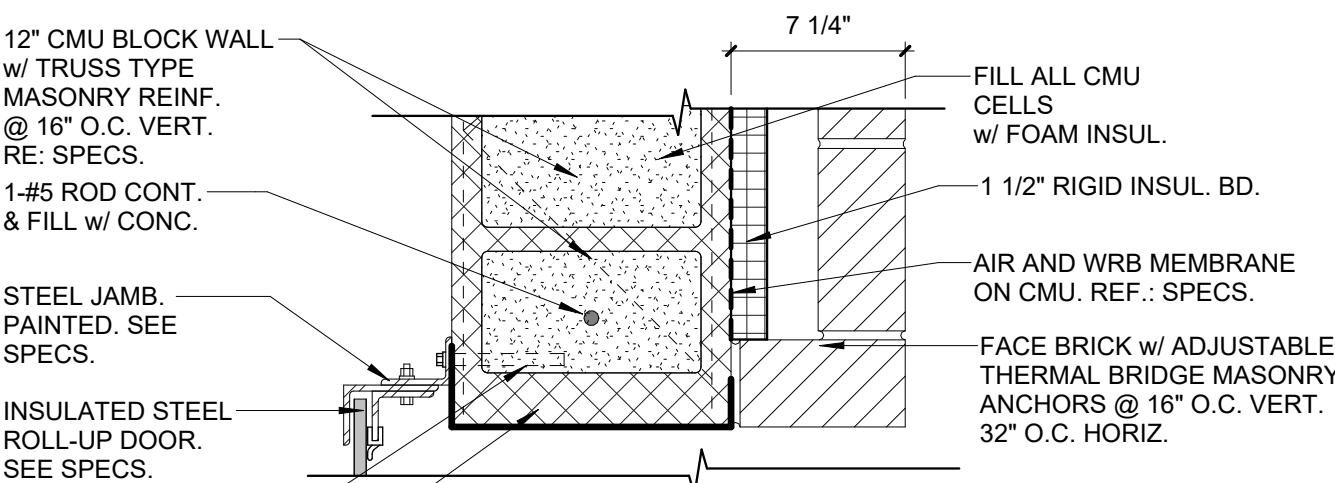
Room Finish Schedule									
NUMBER	ROOM NAME	FLOOR	BASE	WALLS				CEILING TYPE	
				NORTH	EAST	SOUTH	WEST		
101	CONSTRUCTION PRACTICES LAB	SC-1 & 2	RB-1	CMU-1	CMU-1 & 2	CMU-1 & 2; DWC-2	CMU-1 & 2	EXPOSED ACOUSTICAL DECK - PRIMED AND PAINTED	
102	STORAGE	SC-1	RB-1	CMU-1	CMU-1	CMU-1	CMU-1	EXPOSED ACOUSTICAL DECK - PRIMED AND PAINTED	
103	ELECTRICAL	SC-1	RB-1	CMU-1	CMU-1	CMU-1	CMU-1	EXPOSED ACOUSTICAL DECK - PRIMED AND PAINTED	
104	CORRIDOR	LVT-1, 2, & 3	RB-2	GYP-1, 2, & 3	GYP-1	GYP-1	GYP-1	EXPOSED ACOUSTICAL DECK - PRIMED AND PAINTED	
105	WOMEN'S RESTROOM	PFT	MT	PWT	PWT	PWT	PWT	ACT 2	
106	MEN'S RESTROOM	PFT	MT	PWT	PWT	PWT	PWT	ACT 2	
107	JAN.	PFT	RB-1	GYP-1	GYP-1	GYP-1	GYP-1	ACT 2	
108	STORAGE	LVT-3	RB-1	GYP-1	GYP-1	GYP-1	GYP-1	ACT 1	
109	DATA	LVT-3	RB-1	GYP-1	GYP-1	GYP-1	GYP-1	ACT 1	
110	FLEX ROOM	LVT-3	RB-1	GYP-1	GYP-1	GYP-1	DWC-3	EXPOSED ACOUSTICAL DECK - PRIMED AND PAINTED	
111	TECHNOLOGY LAB	CPT-1	RB-2	GYP-4	GYP-4	GYP-1GYP-4	GYP-4	EXPOSED ACOUSTICAL DECK - PRIMED AND PAINTED	
112	MEZZANINE	SC-1	RB-1	CMU-1	CMU-1 & 2	CMU-1 & 2	CMU-1 & 2	EXPOSED - PRIMED AND PAINTED	

Grand total: 12

FINISHES				GENERAL NOTES	
FLOORS - REFERENCE FLOOR PATTERN PLAN		WALLS	ONLY REPRESENTS FINISH LAYER OF WALL ASSEMBLY UNLESS NOTED OTHERWISE		1. ALL FINISH COLORS ARE TO BE APPROVED BY OWNER AND ARCHITECT ONCE PHYSICAL SAMPLES ARE RECEIVED FROM CONTRACTOR FOR EVERY MATERIAL IN THE PROJECT. EVERY MATERIAL COLOR IN THE PROJECT WILL BE APPROVED AT ONE TIME. THE CONTRACTOR'S DELAY IN PROVIDING ALL SUBMITAL SAMPLES FOR REVIEW AND APPROVAL WILL NOT CONSTITUTE AN EXTENSION OF PROJECT TIME. THE ARCHITECT WILL NOT APPROVE ONE COLOR WITHOUT ALL MATERIAL SAMPLES FOR CONSIDERATION. A COLOR BOARD WILL BE PRODUCED FOR THE OWNER TO APPROVE ALL COLORS AT ONE TIME.
SC-1	POLISHED AND STAINED FULL AGGREGATE CONCRETE - SEE SPECIFICATIONS. STAIN COLOR 1. *ALL PUBLIC-USE SPACES TO BE POLISHED.	GYP 1	5/8" GYPSUM BOARD - TAPE, FLOAT, AND PAINT COLOR 1 - SEE SPECIFICATIONS		
		GYP 2	5/8" GYPSUM BOARD - TAPE, FLOAT, AND PAINT COLOR 2 - SEE SPECIFICATIONS		
SC-2	POLISHED AND STAINED FULL AGGREGATE CONCRETE - SEE SPECIFICATIONS. STAIN COLOR 2. *ALL PUBLIC-USE SPACES TO BE POLISHED.	PWT	PORCELAIN WALL TILE - SEE SPECIFICATIONS		
		CMU-1	CONCRETE MASONRY UNIT COLOR 1 - SEE SPECIFICATIONS		
		CMU-2	CONCRETE MASONRY UNIT COLOR 2 - SEE SPECIFICATIONS		
RUBBER	RUBBER STAIR TREADS - SEE SPECIFICATIONS				
PFT	PROCELAIN FLOOR TILE - SEE SPECIFICATIONS				
LVT-1	LUXURY VINYL TILE - SEE SPECIFICATIONS				
LVT-2	LUXURY VINYL TILE - SEE SPECIFICATIONS				
LVT-3	LUXURY VINYL TILE - SEE SPECIFICATIONS				
CPT-1	CARPET TILE - SEE SPECIFICATIONS				
BASE		CEILING			2. ALL EXPOSED STRUCTURAL STEEL AT WALLS & CEILINGS ARE TO BE PAINTED. SEE SPECS.
		ACT 1	2' x 2' ACOUSTICAL TILE - SEE SPECIFICATIONS		
		ACT 2	2' x 2' WASHABLE ACOUSTICAL TILE - SEE SPECIFICATIONS		3. PROVIDE 4"x4" PAINT MOCKUPS FOR ALL COLOR SELECTIONS TO BE APPROVED BY OWNER.
			<u>ACOUSTICAL DECK SHALL BE SHOP PRIMED WHITE AND FIELD PAINTED. COLOR TO BE SELECTED BY ARCHITECT.</u>		
RB-1	4" RUBBER BASE COLOR 1 - SEE SPECIFICATIONS				4. ALL EXPOSED CONDUIT, PIPING, AND RELATED ACCESSORIES SHALL BE PAINTED TO MATCH THE COLOR DESIGNATIONS INDICATED IN THE LEGEND FOR SYSTEM IDENTIFICATION. COLOR CODING SHALL BE CONTINUOUS AND CLEARLY VISIBLE THROUGHOUT ALL ACCESSIBLE AREAS. WHERE
RB-2	4" RUBBER BASE COLOR 2 - SEE SPECIFICATIONS				
MT	METAL TRIM BASE - SCHLUTER DILEX COVE TRIM OR EQUAL- SEE SPECIFICATIONS				



1 JAMB DETAIL
1 1/2" = 1'-0"



4 HEAD DETAIL
1 1/2" = 1'-0"

- ### GENERAL NOTES
1. ALL FINISH COLORS ARE TO BE APPROVED BY OWNER AND ARCHITECT ONCE PHYSICAL SAMPLES ARE RECEIVED FROM CONTRACTOR FOR EVERY MATERIAL IN THE PROJECT. EVERY MATERIAL COLOR IN THE PROJECT WILL BE APPROVED AT ONE TIME. THE CONTRACTOR'S DELAY IN PROVIDING ALL SUBMITAL SAMPLES FOR REVIEW AND APPROVAL WILL NOT CONSTITUTE AN EXTENSION OF PROJECT TIME. THE ARCHITECT WILL NOT APPROVE ONE COLOR WITHOUT ALL MATERIAL SAMPLES FOR CONSIDERATION. A COLOR BOARD WILL BE PRODUCED FOR THE OWNER TO APPROVE ALL COLORS AT ONE TIME.
 2. ALL EXPOSED STRUCTURAL STEEL AT WALLS & CEILINGS ARE TO BE PAINTED. SEE SPECS.
 3. PROVIDE 4"x4" PAINT MOCKUPS FOR ALL COLOR SELECTIONS TO BE APPROVED BY OWNER.
 4. ALL EXPOSED CONDUIT, PIPING, AND RELATED ACCESSORIES SHALL BE PAINTED TO MATCH THE COLOR DESIGNATIONS INDICATED IN THE LEGEND FOR SYSTEM IDENTIFICATION. COLOR CODING SHALL BE CONTINUOUS AND CLEARLY VISIBLE THROUGHOUT ALL ACCESSIBLE AREAS. WHERE FACTORY COLOR IS NOT PROVIDED, THE CONTRACTOR SHALL FIELD-APPLY PAINT IN ACCORDANCE WITH THE LEGEND. STICKER FOR EAHC DIFFERENT TYPE OF SYSTEM SHALL BE PROVIDED ON THE VISIBLE PIPES AS WELL
1. FIRE ALARM = MAROON
 2. POWER = RED
 3. DATA / WIFI = ORANGE
 4. HOT WATER = RED
 5. COLD WATER = BLUE
 6. REFRIGERANT PIPING = SILVER OR WHITE
 7. STORM = GREEN
 8. WASTE = BROWN
 9. VENT = GRAY OR CLEARLY LABELED
 10. GAS PIPING = YELLOW

GENERAL NOTES

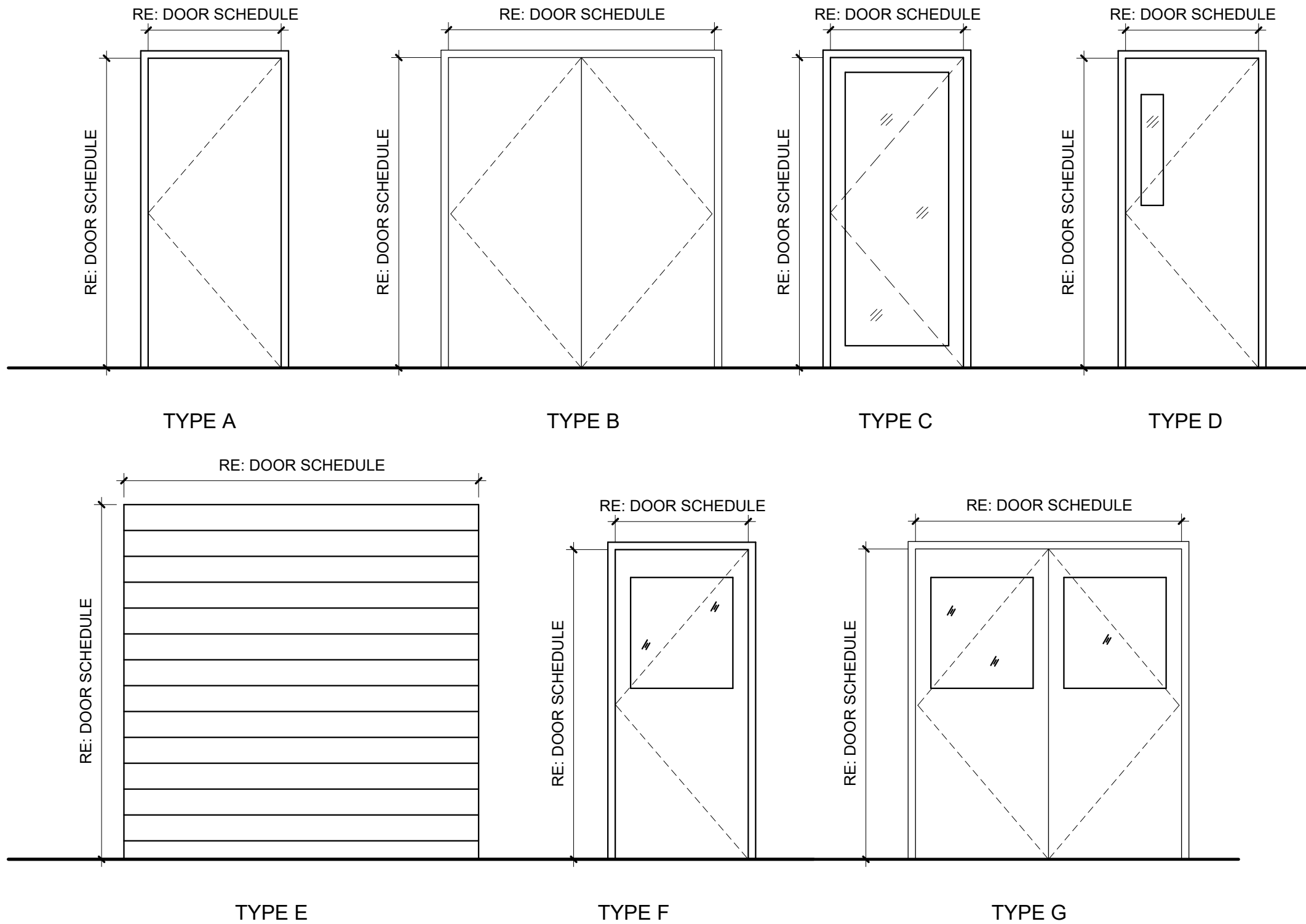
1. ALL DOORS IN SMOKE PARTITIONS, SMOKE BARRIERS & FIRE WALLS SHALL BE PROVIDED WITH DOOR CLOSERS AND SHALL NOT BE UNDERCUT. CLEARANCE FOR DOOR OPERATION SHALL BE 1/8" MAX.
2. ALL DOORS IN 1 HOUR RATED WALLS SHALL BE 45 MIN. RATED.
3. INSTALL SEALANT AROUND PERIMETER ON ALL EXTERIOR OPENINGS WHERE RECOMMENDED BY MANUFACTURER.
4. ALL CMU BOND BEAMS BY STRUCTURAL ENGINEER. VERIFY IF SINGLE AND DOUBLE BOND BEAMS.
5. SEE HARDWARE SCHEDULE FOR MORE INFORMATION.

Door Schedule

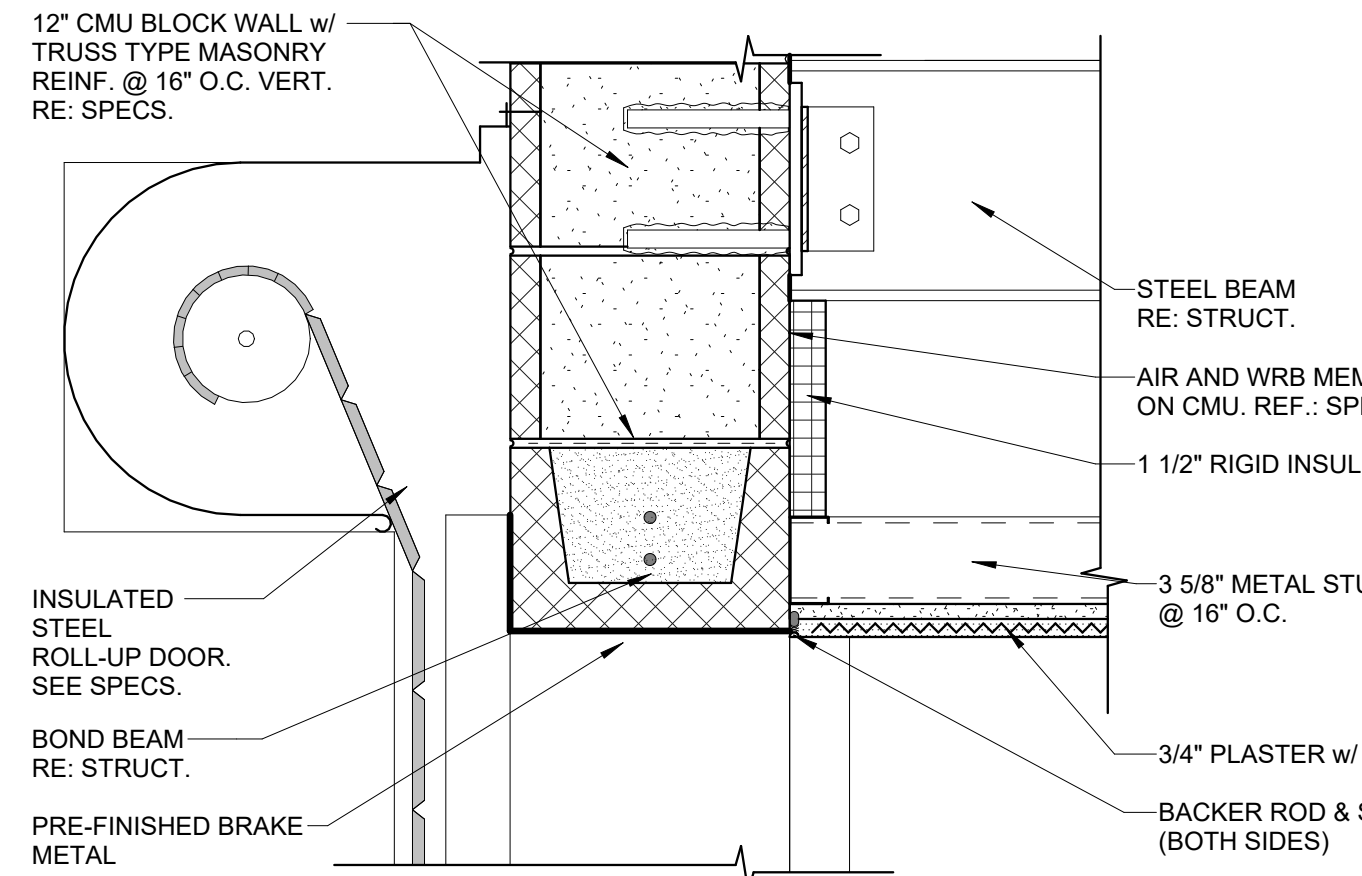
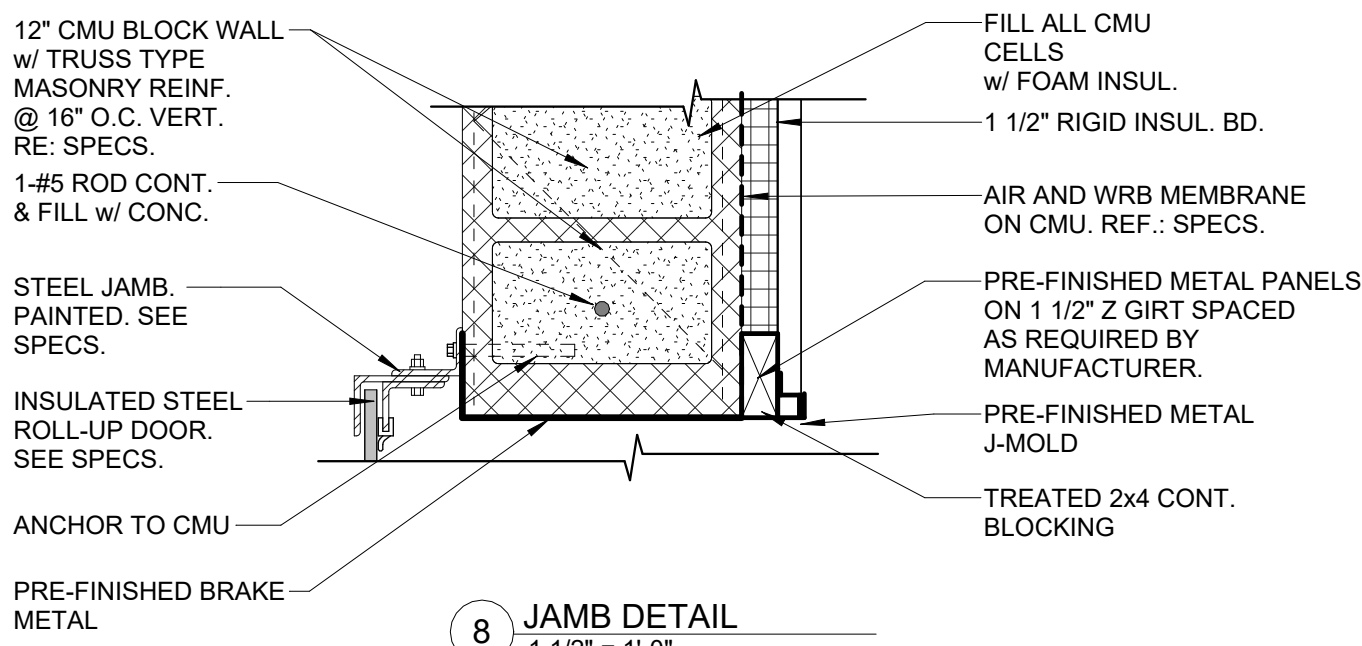
MARK	WIDTH	HEIGHT	DOOR MATERIAL	FRAME MATERIAL	DETAIL		ELEV.	FIRE RATING	ACCESS CONTROL	NOTES
					JAMB	HEAD				
101	3' - 0"	7' - 0"	H.M.	H.M.	1/A2.01	2/A2.01	F			EXTERIOR DOOR, PANIC DEVICE, EXIT ONLY
102	3' - 0"	7' - 0"	H.M.	H.M.	1/A2.01	2/A2.01	F			EXTERIOR DOOR, PANIC DEVICE, EXIT ONLY
103	3' - 0"	7' - 0"	H.M.	H.M.	3/A2.01	4/A2.01	A			EXTERIOR DOOR, PANIC DEVICE
104	12' - 0"	18' - 0"			6/A2.01	7/A2.01	E			ROLL-UP DOOR - SILL DETAIL - 5/A2.01 - MOTORIZED
105	10' - 0"	12' - 0"			8/A2.01	7/A2.01	E			ROLL-UP DOOR - SILL DETAIL - 5/A2.01 - MOTORIZED
106	3' - 0"	7' - 0"	H.M.	H.M.	3/A2.01	4/A2.01	A		CARD ACCESS	EXTERIOR DOOR, PANIC DEVICE
107	6' - 0"	7' - 0"	H.M.	H.M.	1/A2.02	2/A2.02	B		CARD ACCESS	EXTERIOR DOOR, PANIC DEVICE
108	6' - 0"	7' - 0"	H.M.	H.M.	3/A2.02	4/A2.02	B	3 HR		
109	6' - 0"	7' - 0"	H.M.	H.M.	5/A2.02	6/A2.02	B	45 MIN.		PANIC DEVICE
110	3' - 0"	7' - 0"	H.M.	H.M.	7/A2.02	8/A2.02	A			
111	3' - 0"	7' - 0"	P. LAM.	H.M.	9/A2.02	10/A2.02	A			
112	3' - 0"	7' - 0"	P. LAM.	H.M.	9/A2.02	10/A2.02	A			
113	6' - 0"	7' - 0"	P. LAM.	H.M.	11/A2.02	12/A2.02	G		CARD ACCESS	PANIC DEVICE
114	3' - 0"	7' - 0"	P. LAM.	H.M.	11/A2.02	12/A2.02	A			
115	3' - 0"	7' - 0"	P. LAM.	H.M.	11/A2.02	12/A2.02	A			
116	3' - 0"	7' - 0"	P. LAM.	H.M.	11/A2.02	12/A2.02	A			
117	3' - 0"	7' - 0"	P. LAM.	H.M.	11/A2.02	12/A2.02	D		CARD ACCESS	PANIC DEVICE
118	3' - 0"	7' - 0"	P. LAM.	H.M.	11/A2.02	12/A2.02	D		CARD ACCESS	PANIC DEVICE
119	3' - 0"	7' - 0"	H.M.	H.M.	5/A2.02	6/A2.02	F	45 MIN.	CARD ACCESS	PANIC DEVICE
120	4' - 0"	7' - 0"	H.M.	H.M.	7/A2.02	8/A2.02	A			
121	4' - 0"	7' - 0"	H.M.	H.M.	13/A2.02	14/A2.02	A	45 MIN.		

Grand total: 21

NOTE: PROVIDE CONTROL JOINTS ABOVE ALL JAMBS AT ALL INTERIOR DOORS



DOOR ELEVATIONS



7 HEAD DETAIL
1 1/2" = 1'-0"

TBA STUDIO
ARCHITECTURE
103 Cypress Street
West Monroe, LA 71291
Tel. 318.340.1550
Fax. 318.998.1315
www.tbastudio.com

TBA

SCHOOL OF CONSTRUCTION PRACTICE
LAB BUILDING, UNIVERSITY OF
LOUISIANA MONROE
507 Filhiol Ave, Monroe, LA 71203

DRAWING REVISIONS

No.	Description	Date

DRAWN BY: KB, MU
CHECKED BY: CW
SHEET
A2.01
Date: NOV 2025
Project No.: 24-0059
File Name:
DESCRIPTION:
ROOM FINISH
SCHEDULE & DOOR
SCHEDULE